

# 28621 Diesel Drive



**28621 North Diesel Dr. Bonita Springs**

**Warehouse building units available features 7,472 sq. ft.  
Easy access to US 41 and I-75: off of Bonita Beach Road right  
near the Greyhound track**



BARTLEY REALTY LLLP

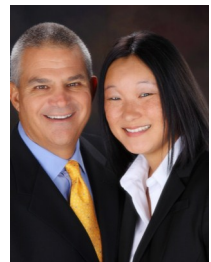
**CONTACT: DAVE or MINDI BARTLEY**

**PHONE: 239.596.1181**

**E-MAIL: [dave@BartleyRealty.com](mailto:dave@BartleyRealty.com)**

**ONLINE: [www.BartleyRealty.com](http://www.BartleyRealty.com)**

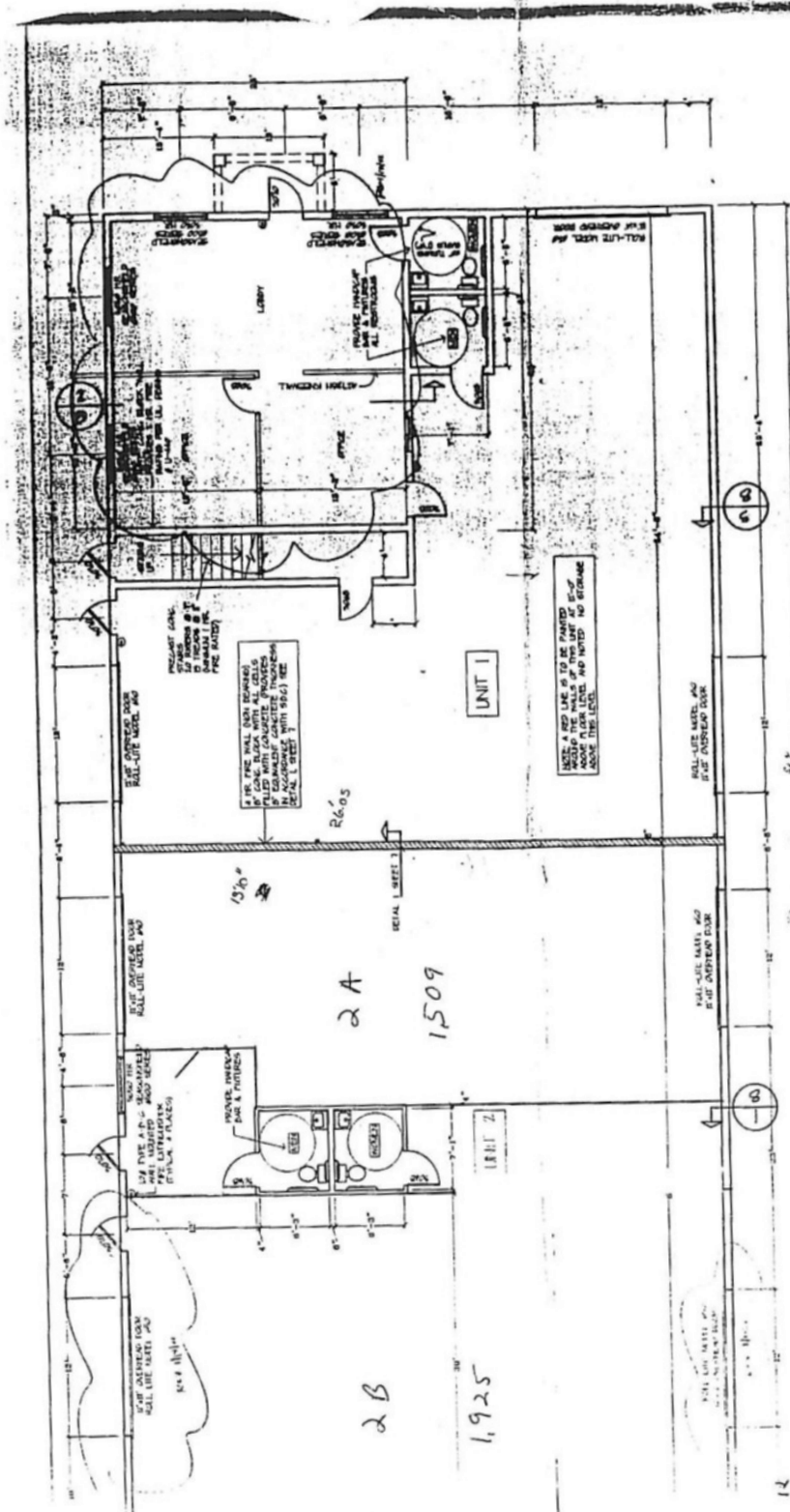
**4522 Executive Dr. Suite 103 Naples Florida 34119**



- **Unit 2 is 3,434 S/F offered at \$5.00 per S/F plus \$2.00 CAM**
- **Unit 2A is 1,509 S/F offered at \$7.00 per S/F plus \$2.00 CAM**
- **Unit 2B is 1,925 S/F offered at \$6.00 per S/F plus \$2.00 CAM**
- **Unit 3 is 800 S/F of Office space for \$600 per month.**

*The statements and figures presented herein, while not guaranteed, are secured from sources we believe authoritative. Subject to prior sale, lease, withdrawal and price change without notice.*

*This is not a solicitation for your listing if your property is currently listed with another broker.*



REVISION  
JAN 11 2002

**LOT 15 BUILDING**

PROJECT NO. 15-001  
 DATE 10/15/01  
 DRAWN BY J. BOMBASSARO  
 CHECKED BY J. BOMBASSARO  
 SCALE 1/8" = 1'-0"

**JOSEPH J. BOMBASSARO, P.E.**  
 ARCHITECT  
 1000 N. W. 15th Ave., Suite 100  
 Ft. Lauderdale, FL 33304  
 PHONE: (954) 552-5521  
 FAX: (954) 552-5522  
 CELL: (954) 552-5523  
 E-MAIL: jrbomb@jrbomb.com

FLOOR PLAN SCALE 1/8" = 1'-0"